

# Hourly Parking Policy

## 逾時逗留停車場收費措施





## Agenda

---

- I. Objective
- II. Scope of Policy
- III. Charging Mechanism
- IV. Rate of Charges
- V. Case Study – IVRS Notification
- VI. Collection of Charges
- VII. Exceptional Case

# I. Objective

- In order to maximize the operational efficiency of truck docks and parking facilities of AAT, an hourly parking charge scheme is introduced with effect from 01<sup>st</sup> July 2008.

## II. Scope of Policy

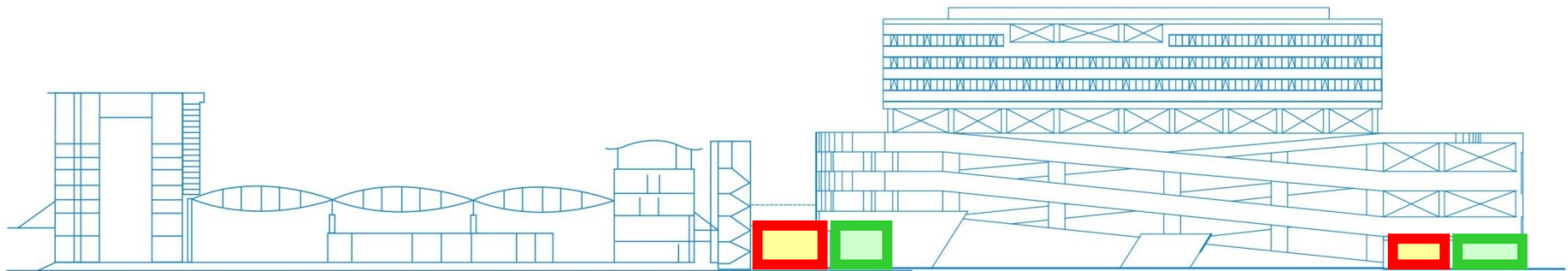
- Applies to **ALL vehicles** of Internal and External parties that enter AAT terminal area.
- External Parties are vehicles of
  - AAT customer airlines
  - AAT/AAS tenants
  - Cargo Agents & Truckers
  - HKSAR Government
  - Services Providers/ Supply Companies
  - Visitors who come to our premise for business nature / non-business nature
    - E.g. Meeting with AAT /AAS or their Tenants), Passenger pick/drop-off
- Internal Parties are vehicles of
  - AAT/AAS permanent staff
  - AAS Vehicles
  - VIP (e.g. Board Members)

# III. Charging Mechanism



Terminal 1

Terminal 2



North Exit North Entrance

South Exit South Entrance



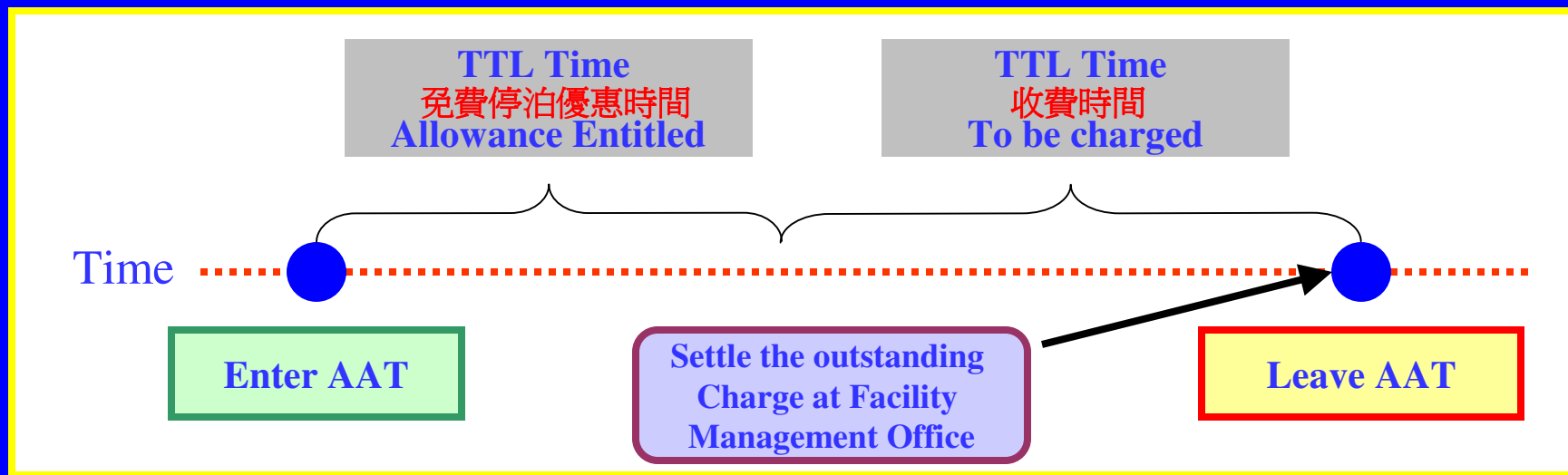
Subject to the Policy

Arrival at AAT

Activity

Departure at AAT

# III. Charging Mechanism




$$\text{Chargeable Hour} = \text{Leave AAT Time} - \text{Entry AAT Time}$$

$$\text{Hourly Parking Hour} = \text{Chargeable hour} - \text{Free dwell time allowance (if any)}$$

$$\text{Payable Amount} = \text{Hourly Parking Hour} \times \text{Chargeable rate per hour}$$

# III. Charging Mechanism

A period of free dwell time will be given to vehicles, which have **COMPLETED** the business related activity according to the declared entry purpose.

請選擇進場目的 

出口	入口
文件處理	領取/交還戴具
聯邦快遞	AAS(星網/紀星)
租戶	租戶停泊
	English

## IV. Rate of Charge – Cargo Related

Incoming Activity	Rate / per Hour or part thereof			
	Free	\$20	\$30	\$40
1. Import Cargoes	First 4 hours	5th to 7th hour	8th to 10th hour	11th hour onward
2. Collect/ Return Empty ULD	First 4 hours	5th to 7th hour	8th to 10th hour	11th hour onward
3. Export Cargoes	First 4 hours	5th to 7th hour	8th to 10th hour	11th hour onward
4. Documentation	First 2 hours	3rd to 5th hour	6th to 8th hour	9th hour onward
5. Multiple Activities	First 5 hours	6th to 8th hour	9th to 11th hour	12th hour onward

Progressive Increment of Hourly Charges

# IV. Rate of Charge - Others

Incoming Activity	Rate / per Hour or part thereof			
	Free	\$20	\$30	\$40
Meeting # (Pre-registration required)	First 3 hours	4th to 6th hour	7th to 9th hour	10th hour onward
Service Providers of AAT# (Pre-registration required)	First 3 hours	4th to 6th hour	7th to 9th hour	10th hour onward
<b>Non-Business Related</b>	-	<b>First 3 hours</b>	4th to 6th hour	7th hour onward
Passenger Pickup or Drop-off	First 30 minutes	First 3 hours	4th to 6th hour	7th hour onward

Progressive Increment of Hourly Charges 

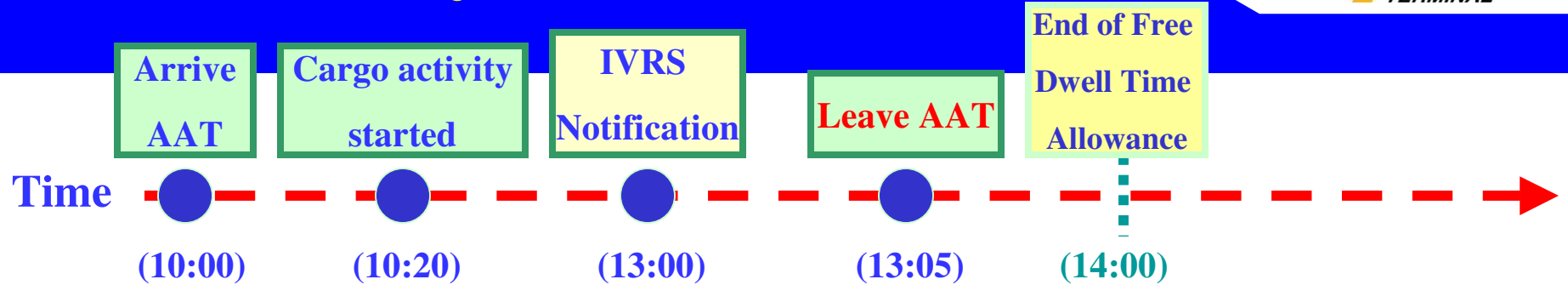
# IV. Rate of Charge - Others

Incoming Activity	Rate / per Hour or part thereof			
	Free	\$20	\$30	\$40
Tenant (Operation)	First 4 hours	5th to 7th hour	8th to 10th hour	11th hour onward
<b>Tenant (Parking)*</b>	<b>All hours</b>	-	-	-
Fedex	First 4 hours	5th to 7th hour	8th to 10th hour	11th hour onward
AAS	First 4 hours	5th to 7th hour	8th to 10th hour	11th hour onward
40 Feet or above long vehicle	First 8 hours	9th to 11th hour	12th to 14th hour	15th hour onward

#AAT reserves the right to reject the application for pre-registration.

\*The dwell time of any vehicle at tenant controlled truck dock area/ tenants entitled parking lot would be excluded from the calculation of charge. If all tenant's entitled parking slots are occupied, the vehicle with the latest entry time will be charged as "Non-Business Related" vehicle until such a time that any entitled parking slot has become available.

# V. Case Study (I) – IVRS Notification

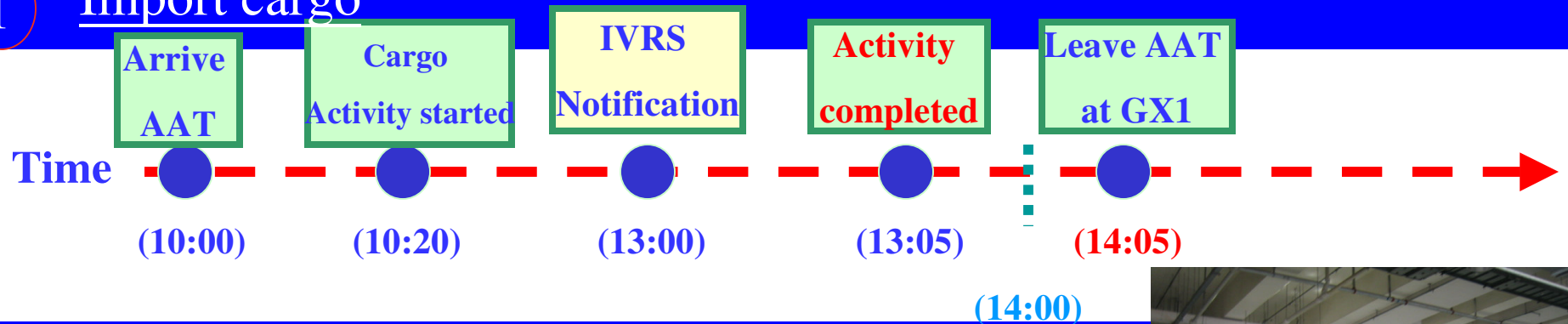


4 hours free dwell time will be given to vehicles, which have **COMPLETED** the business related activity according to the **declared entry purpose** (Import Cargoes).

# V. Case Study (II) – Cargo related



## 1 Import cargo



## 2 出閘口



車牌號碼	LE3137
智泊咭類型	永久智泊咭
禁制/罰款原因	
泊車費	請清繳泊車費

## 3



If the vehicle driver fails to leave AAT before 14:00, the vehicle driver should drive the vehicle to designated temporary parking areas (e.g G/F of T2) and proceed to FMO to settle the payment immediately.

S Y N E R G Y T O M A K E

## 4 Payment Receipt (Sample)

Chargeable Hour = Leave AAT Time –  
Entry AAT Time  
= 250 mins = 5 hrs

Hourly Parking Hour(Payable hour)  
= Chargeable Hour – Free Dwell Time  
Allowance – Pre-waived Hour  
= 5hr – 4hr (Free dwell time allowance) = 1 hr

Hourly Parking Charge(Payable Amount)  
= Total Amount – Adjustment Amount – Paid  
Amount  
= (Chargeable hour x Chargeable rate per  
hour) – Adjustment Amount – Paid Amount  
= (1hr x \$20) – 0 – 0 = \$20

Rate of charge is based on per hour or part thereof.  
Parking time with less than 1 hour will be treated as 1  
hour parking time.

亞洲空運中心  
Asia Airfreight Terminal

No:PKP08052202095319686

日期 Date: 22-May-2008 時間 Time: 14:09:49

車牌號碼 Vehicle No : C007  
進場時間 Entrance Time : 2008/05/22  
10:00:00  
繳費時間 Payment Time : 2008/05/22  
14:09:49

AIRFREIGHT  
NAL

### 繳費詳情:

#### Payable Details:

時租泊車時間 Hourly Parking Time (Min)	: 0
商業活動時間 Business Related Time (Min)	: 250
租戶泊車時間 Tenant Parking Time (Min)	: 0
總計算時間 Chargeable Hour	: 5
免費泊車時數 Free Dwell Time Allowance (Hour)	: 4
預先豁免時數 Pre-waived Hour	: 0
應付時數 Payable Hour	: 1
總金額 Total Amount (\$)	: 20.0
調整金額 Adjustment Amount (\$)	: 0.0
已付金額 Paid Amount (\$)	: 0.0

應付金額 Payable Amount (\$) : 20.0

收到金額 Paid (\$) : 20.0

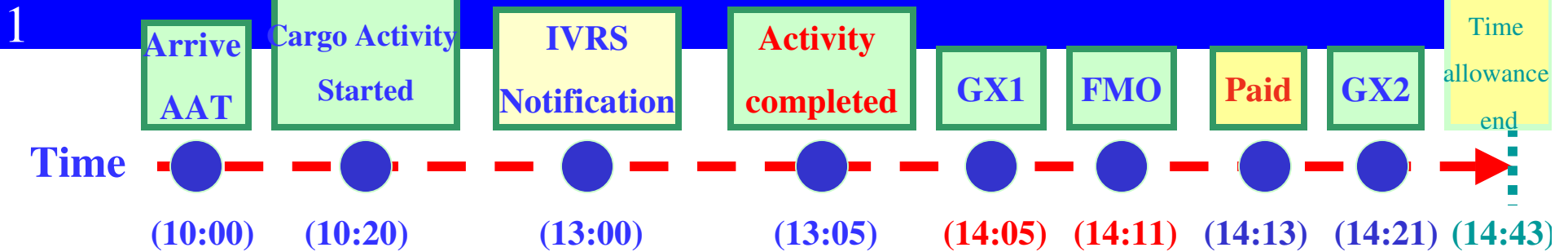
#### 附註 Remarks:

1. 車輛於付費後必須於30分鐘內離開本貨站，逾時區區須支付時租費用。  
ALL vehicles MUST leave the Terminal within 30 mins after the payment. Else  
hourly charges will be imposed accordingly.

2. 繳費時未足一小時亦作一小時計算  
Parking Time with less than 1 hour will be treated as 1 hour parking time.

如有疑問，請致電 2949-7700 -

# Case Study (III) – Cargo Related



2

出閘口	
車牌號碼	LF119
智泊咭類型	永久智泊咭
禁制/罰款原因	
泊車費	

1. Vehicles have to leave AAT **within 30 mins** after settlement of hourly parking charges
2. Vehicles, failing to do so will be subjected to further hourly parking charges under **non-business related purpose**.

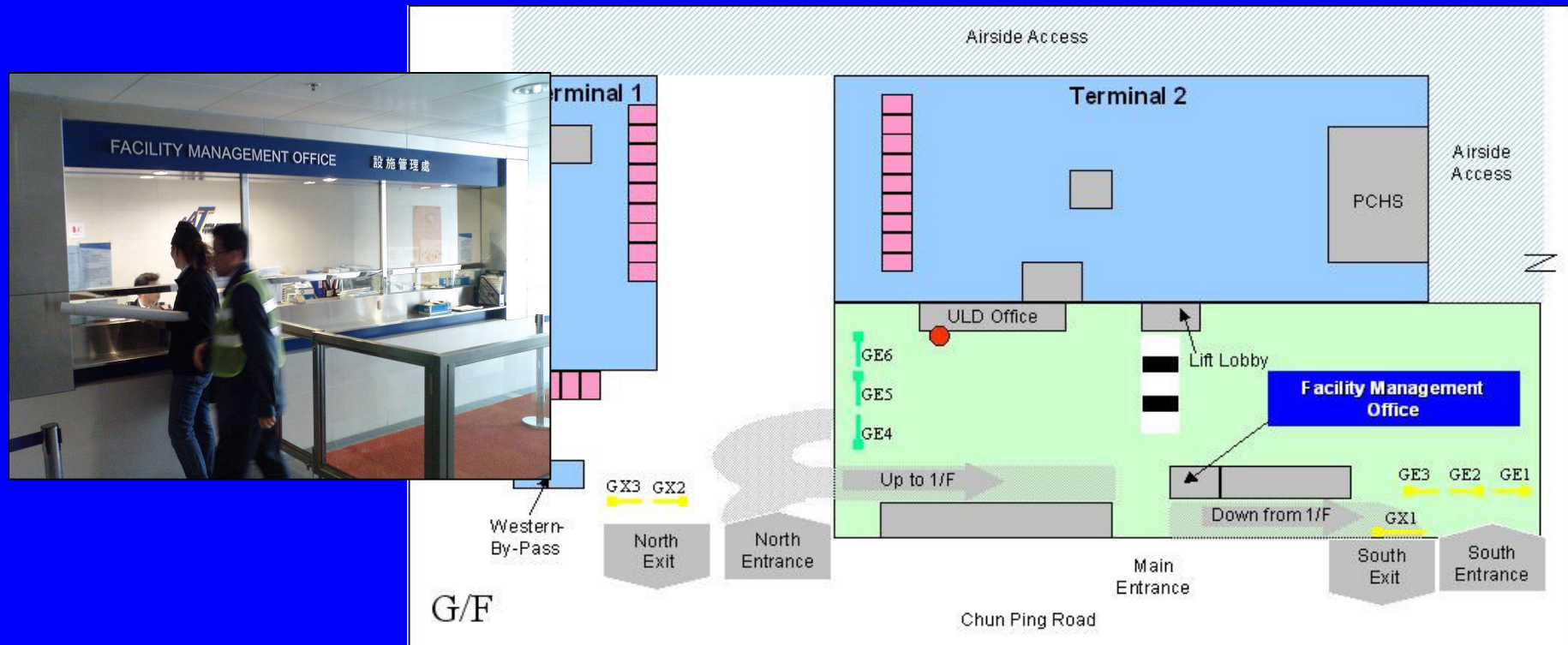
**No hourly charge incurred**

## Case Study (IV) Pickup and dropoff

- 30 minutes free dwell time allowance will be given to vehicles that come to the terminal for Passenger pickup or drop-off and leave the terminal..
- Driver shall take the entry slip that is printed from the kiosk at the entry gate (GE1/2 or 1E1/2)
- Driver shall present the entry slip to FMO staff when arrive the exit gate (GX1/2/3).
- FMO staff will use handheld terminal to scan the barcode of the entry slip to verify the free dwell time allowance.
- Vehicles, failing to do so will be subjected to further hourly parking charges under non-business related purpose and the vehicle driver shall proceed to Facility Management Office (FMO) to apply for single-entry i-Pass.
- **Remark :**
  - 1/ *Penalty of HKD120 will be imposed in case of loss or damage to the entry slip.*
  - 2/ *The administration fee of the issuance of single-entry i-Pass is HKD\$20.00*

# VI. Collection of Charges

- Charges are collected at AAT Facility Management Office (G/F of Terminal 2),
- Only **CASH** is accepted for settlement of hourly parking charges.
- All outstanding payment must be settled at FMO before leaving AAT Terminals



## VII. Exception

- Under any of the following conditions, the vehicles will **NOT** be counted in the charging mechanism
  - The time spent of a car/truck on Tenant self-monitored truck dock area (G/F Terminal 1)
  - The time spent of a car/truck on tenant truck park area (3/F of Terminal 2)
- **NO** hourly parking charge would be imposed on any vehicles in case of **system failure** that can be verified by AAT **Customer Services Manager** (e.g. interface failure between CMS & TCS, TCS Shutdown)
- For any enquiry, please contact our FMO at 29497700.



*VIII.*

*Thank You !*

